

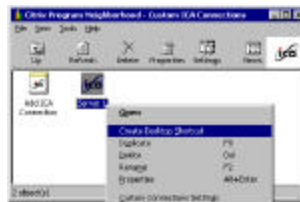
### **Adding a Citrix ICA connection to your Startup.**

**Note:** This does not apply to users with WYSE terminals; it is for PC users ONLY. These changes should be applied to the local machine before connecting to the MWS network.

**Step 1:** Click on **Start**, Scroll up to **Programs**, **Citrix ICA Client** and **Citrix Program Neighborhood**.



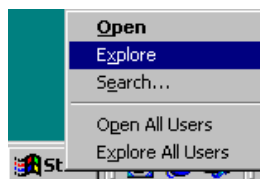
**Step 2:** Right-click on the connection you want to add to your startup and click on **Create Desktop Shortcut**. An ICA icon will be placed on your desktop.



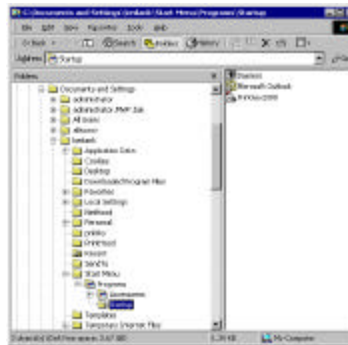
**Step 3:** From your desktop, right-click on the new ICA icon created, and click on **Copy**.



**Step 4:** Right-click on Start and click on **Explore**.



**Step 5:** Click on **Programs**, right-click on **Startup** and click on **Paste**.



Exit out of everything and restart your system to recognize the changes.