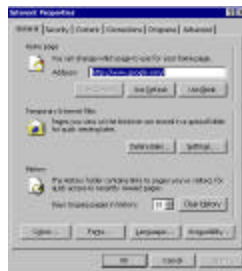


Setting the homepage in Internet Explorer.

Step 1: From your desktop, right-click on your Internet Explorer icon and then click **Properties**.



Step 2: In the Home Page section, type the desired address to be set as your default home page. e.g.. [http://www.google.com]



Step 3: Click on **Apply** and **OK** to accept the changes.

Note: While browsing using Internet Explorer, if you want to set the page you are on as the default home page; from the toolbar click on **Tools** then **Internet Options**.



From the Home Page section, click **Use Current** and then **Apply** and **OK** to accept the changes.

