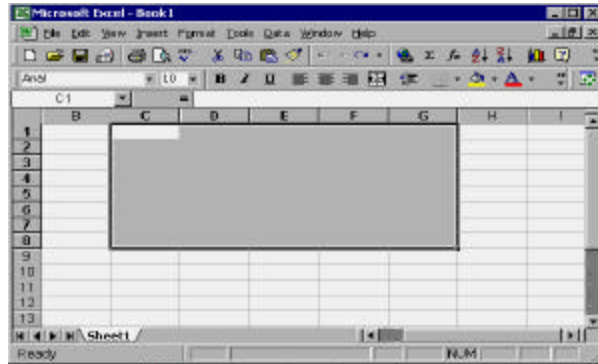


Merging cells

Step 1: Highlight the cells to be connected together by clicking on the cell and dragging the cursor.

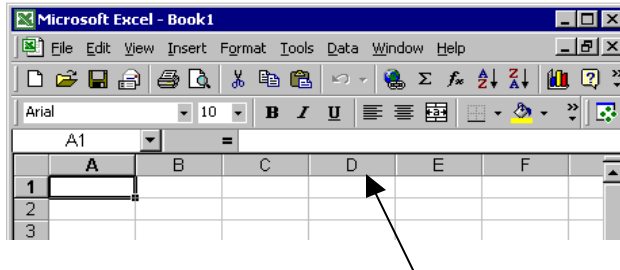
*E.g. of a cell is C1, C2 etc.

Fig 1



Step 2: Click on the merge cells button pointed, to connect the cells.

Fig 2



Shows the merged cells as *a cell* from the selected area in - Fig 1.

Fig 3

